

Anticipated Project Schedule

Task Name	2009			2010									2011					
	Oct	Nov	Dec	Jan	Feb	Mar	Apr	May	Jun	Jul	Aug	Sep	Oct	Nov	Dec	Jan	Feb	Mar
Task 1 - Administrative Requirements of Groundwater Management Plan Process																		
Task 2 - Public Outreach and Stakeholder Involvement		▲			▲		▲				▲ WRAC			▲			▲ WRAC	
Task 3 - Identify Groundwater Issues and Develop Basin Management Objectives								TM1										
Task 4 - Water Demand and Supply Analysis					TM2													
Task 5 - Prepare 2009 Annual Groundwater Report					SAP											DMS GWR		
Task 6 - Prepare Groundwater Management Plan													DGMP					FGMP
Task 7 - Technical Review - QA/QC				SAP TM2			TM1					DGMP			DMS GWR		FGMP	
Task 8 - Project Management																		

▲ Groundwater Advisory Committee (GAC) Meetings
 WRAC - Water Resource Advisory Committee Meetings

Task Specified Activity

Ongoing, Intermittent Activity

TM 1 - Groundwater Issues and Provisional BMOs
 TM 2 - Existing and Projected Land and Water Use
 SAP - Sampling and Analysis Plan
 DMS - Groundwater Data Management System
 GWR - 2009 Annual Groundwater Report
 DGMP - Draft Groundwater Management Plan
 FGMP - Final Groundwater Management Plan



Paso Robles Groundwater Basin Management Plan



October 2009

The City of Paso Robles and San Luis Obispo County are leading the preparation of a groundwater management plan (GMP) for the Paso Robles Groundwater Basin. The GMP will address groundwater conditions, identify local and basin-wide groundwater issues, and outline voluntary measures to protect groundwater resources within the plan area.

The meeting will include a review of the project purpose, approach, and schedule. Additionally, the formation of the Paso Robles Basin GAC will be discussed. The draft GMP is scheduled to be released in November 2010, with the final GMP due February 2011.

Parties interested in the GMP are encouraged to participate in the planning process by attending public meetings scheduled by the Paso Robles Basin GAC, or contacting the City or County (*contact information on back*).

The Project Kickoff Meeting will be held:

Thursday, November 12, 2009
 5:30 p.m. – 7:30 p.m.
 City of Paso Robles
 Emergency Operations Center
 900 Park Street



For more information, please visit:
www.SLOCountyWater.org

Christopher Alakel, PE
 Water Resources Manager
 TEL: (805) 227-7200 EXT. 7715
 CALakel@prcity.com

Keith Larson
 Water Conservation Manager
 TEL: (805) 227-7238
 KLarson@prcity.com

Courtney Howard
 Water Resources Engineer
 TEL: (805) 781-1016
 choward@co.slo.ca.us



Benefits of the Groundwater Management Plan to Water Users

- Long-term sustainability of the groundwater supply
- Improved water quality
- Maintenance of groundwater levels and mitigation of water level declines
- Lower pumping costs
- Preserve local control of the groundwater basin

Why You Should Participate in the Stakeholder Process

- Influence development of basin management objectives
- Provide local knowledge, data, and expertise in development of the plan
- Represent your interests
- Help develop an effective plan with community support and buy-in

Paso Robles Basin Overview

The Paso Robles Groundwater Basin (Basin) is subdivided into eight Sub-Areas based on variations in the local hydrogeologic conditions:

- North Gabilan
- South Gabilan
- Bradley
- Estrella
- Shandon
- Creston
- San Juan
- Atascadero

Groundwater is the primary water source in the Basin. The amount of use varies across the sub-areas of the Basin, reflecting the type and amount of land development and corresponding water use. The primary water uses in the Basin include irrigated agriculture, urban areas, rural domestic, small community systems, and small commercial systems.

Groundwater use has increased significantly over time, and is approaching the Basin's estimated perennial yield of 97,900 acre-feet per year (AFY). Perennial yield is defined as the rate at which water can be pumped long term without decreasing groundwater in storage.

As a result of long-term groundwater pumping, some areas are experiencing significant declines in groundwater levels. Because of the groundwater level declines, the San Luis Obispo County Board of Supervisors directed county staff to prepare a Resource Capacity Study for the Paso Robles Groundwater Basin. The study provides additional information details that would allow the Board of Supervisors to certify a Level of Severity of the groundwater conditions, and adopt measures to eliminate or reduce the potential undesirable consequences.

Groundwater Use for Selected Years

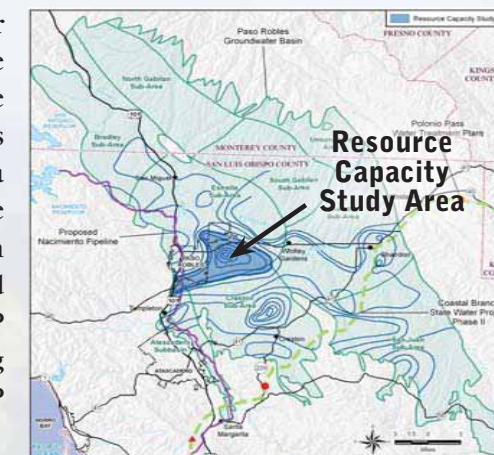
Groundwater Use	1997	2000	2006	
	Amount (AFY)	Amount (AFY)	Amount (AFY)	Percent
Agriculture	49,683	56,551	58,680	67%
Urban	13,513	14,629	15,665	18%
Rural Domestic	9400	9,993	10,891	12%
Small Community	-	-	594	<1%
Small Commercial	1,465	1,465	2,323	3%
Total	74,061	82,638	88,154	100%

Source: Paso Robles Groundwater Basin Resource Capacity Study, June 2009



Paso Robles Groundwater Basin Resource Capacity Study

One of the recommendations of the Paso Robles Groundwater Basin Resource Capacity Study was to continue with the preparation of a Groundwater Management Plan for the Basin. In December 2007, the City of Paso Robles and San Luis Obispo County submitted a grant application to the California Department of Water Resources Local Groundwater Assistance Program to prepare a Regional Groundwater Management Plan for the Paso Robles Groundwater Basin. The project was selected to receive funding, and was initiated in January 2009. The GMP was suspended in February 2009 as a result of the grant funding being suspended. Funding was recently re-instated and the GMP is scheduled to restart in November 2009.



Paso Robles Basin Regional Groundwater Management Plan

The California Department of Water Resources defines groundwater management as:

"...the planned and coordinated monitoring, operation, and administration of a groundwater basin or portion of a groundwater basin with the goal of long-term sustainability of the resource."

The Groundwater Management Planning Act of 2002 (SB1938) authorizes local agencies to update their GMPs. Some of the specified goals of a groundwater management plan include: (1) provide the framework for improved groundwater management, (2) maintain groundwater levels, and (3) protect groundwater quality to ensure long-term groundwater supply reliability in the Basin.

The Paso Robles GMP will build upon prior efforts to address groundwater management issues in the Basin, and identify and introduce projects addressing these issues.

The GMP will be developed by:

- **Establishing Groundwater Setting and Identifying Local Groundwater Issues:** Building upon the existing organization of local water purveyors, agricultural interests, and stakeholders to develop a regional understanding of the groundwater setting and groundwater management opportunities in the Basin.
- **Establishing Basin Management Objectives and Groundwater Management Activities:** Formulating groundwater management activities that emphasize the groundwater information and management aspects within the Basin.
- **GMP Implementation:** Identifying projects and programs that can be implemented to improve long-term water supply reliability in the Basin.

Stakeholder Involvement and Public Outreach

The development of the GMP will utilize an extensive public outreach and stakeholder involvement process to invite and encourage participation and input by urban, agricultural, and rural residential stakeholders and interested parties. This approach will facilitate the cooperative development of the GMP to ensure community support of the Plan.

