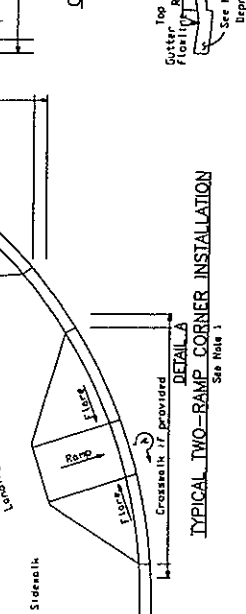
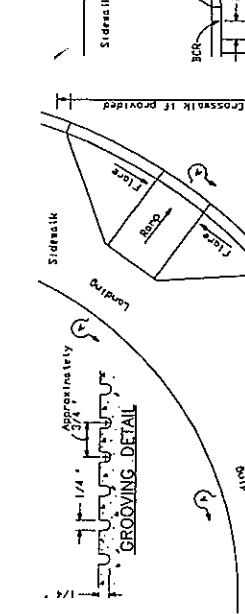
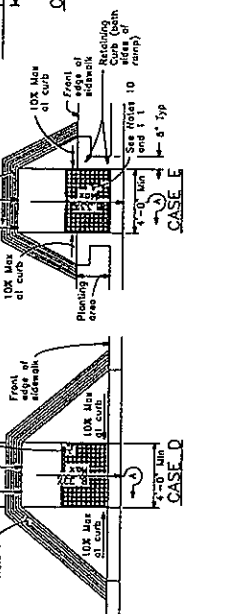
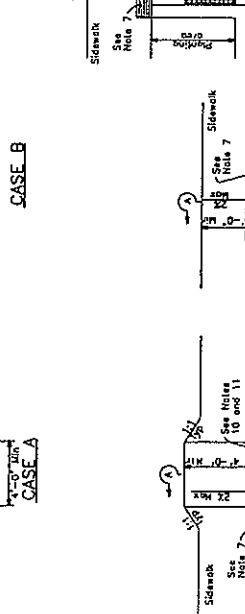
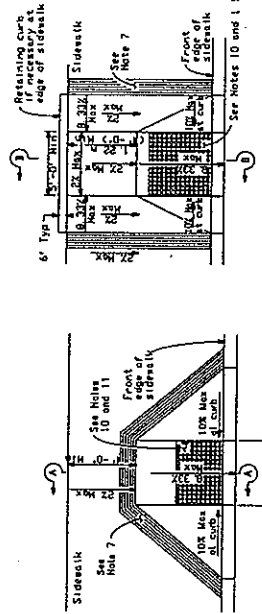
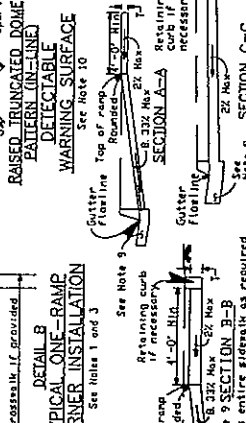
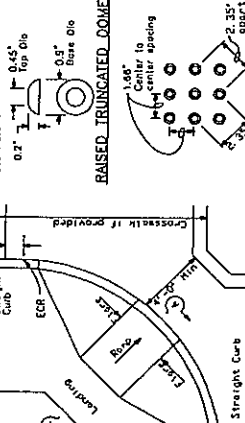
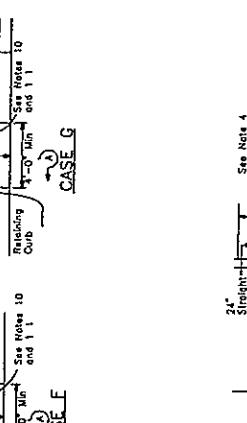
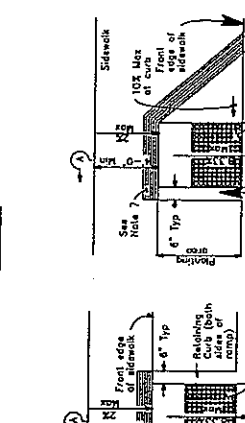
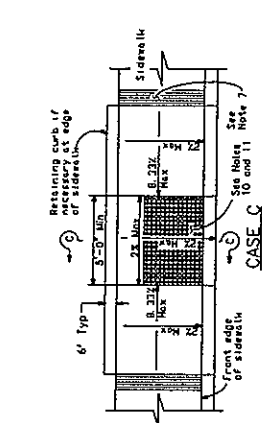


REVISIONS			
DESCRIPTIONS	BY	DATE	APPROVED

NOTES

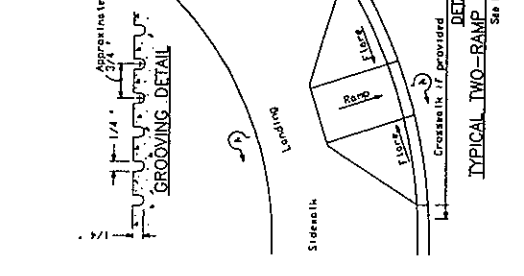
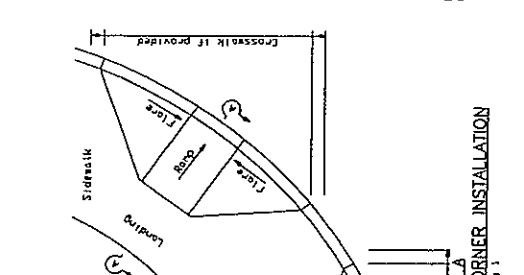
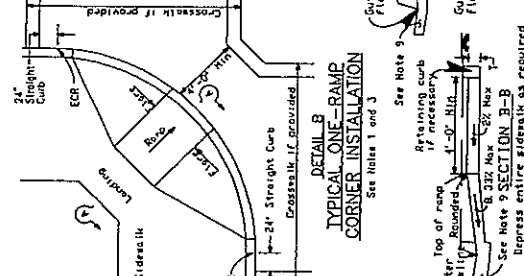
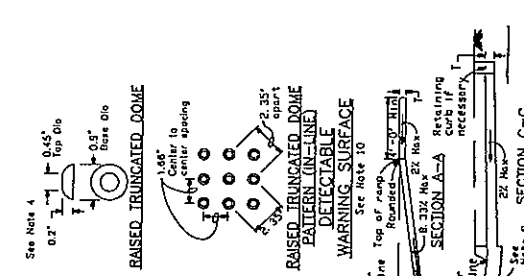
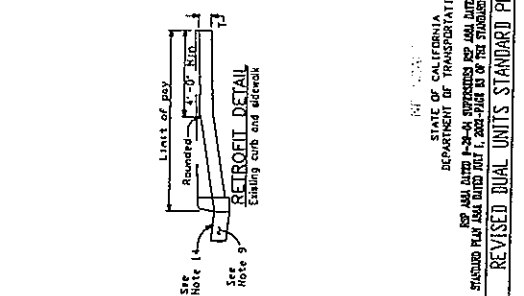
- As site conditions dictate, Case A through Case G curb ramps may be used. These are shown in Detail A and Detail B. The case of curb ramps used in Detail A, B, C, D, E, F, or G may be used at all curb locations, as site conditions dictate.
- If distances from curb to back of sidewalk are not sufficient to accommodate ramp and 4'-0" minimum sidewalk as shown in Case A, the ramp and sidewalk may be widened as in Case B, C, or D by widening as in Case D.
- When ramp is located in center of curb return, crosswalk configuration must be similar to that shown for Detail B.
- As site conditions dictate, the retaining curb side and the front side of the Case C ramp may be constructed in reversed position.
- If located as a curb, the edges of the ramp shall not be parallel, but the minimum width of the ramp shall be 4'-0".
- Side slope of ramp shall vary uniformly from a maximum of 10% at curb to conform with longitudinal slope, except adjacent to top of the ramp, except in Case C and Case F.
- The curb ramp shall be outlined, as shown, with a 1/2" wide border with 1/4" groove approximately 3/4" on center. See grooving detail.
- Transitions from ramps to walks, gutters or streets shall be flush and free of abrupt changes.
- Minimum slope of adjoining gutters, the road surface immediately adjacent to curb ramp, and the curb ramp shall not exceed 5 percent within 4'-0" at the top or bottom of the curb ramp.
- Curb ramps shall have a detectable warning surface that extends the full width and 3'-0" depth of the ramp. Detectable requirements in the Standard Provisions shall apply to the ramp. The edge of the detectable warning surface shall be about the street shall be between 5" and 8" from the gutter flange.
- Sidewalk and ramp thickness, T, shall be 3 1/2" minimum.
- Utility pole bases, manholes, vaults and all other utility facilities shall be installed in accordance with the Standard Provisions or shall be advanced to grade by the owner prior to, or in conjunction with, curb ramp construction.
- For retrofit conditions, removal and replacement of curb upon will be at the Contractor's option, unless otherwise shown on Project plans.



DRAWN BY:
K.S.R.
DESIGNED BY:
DATE:
00/00/00
FILE NAME:
PR-B-9.1.DWG

CITY OF PASO ROBLES
ENGINEERING DIVISION
CURB RAMP DETAILS

DRAWING NO.
B-9.1



STATE OF CALIFORNIA
DEPARTMENT OF TRANSPORTATION
REVISED DUAL UNITS STANDARD PLAN RSP AB8A