

TO: James L. App, City Manager
FROM: Meg Williamson, Interim Public Works Director
SUBJECT: Alley between 10th and 11th Streets at Pine Street
DATE: February 17, 2004

NEEDS: For the City Council to consider designating the alley between 10th and 11th Streets, from Park Street to Pine Street as one-way from East to West.

- FACTS:**
1. A request for a stop sign in the alley between 10th Street and 11th Streets at Pine Street was made due to reports of many near misses at this location due to sight line restriction caused by diagonally parked cars and heavy theatre traffic.
 2. The Streets and Utilities Committee discussed this request at their meeting on January 30, 2004 and recommends that the alley be designated one way from east to west.

**ANALYSIS
AND**

CONCLUSION: The intersection in question has many challenges. Motorists exiting the alley onto Pine Street have sight line restrictions caused by the Clark Building to the north, an intersection to the north only a few feet away, and diagonally parked vehicles to both the north and south. A stop sign would require alley traffic to slow to a stop before proceeding onto Pine Street; however, a stop sign would not be an effective way to alleviate site line problems, since motorist stopped at the sign would not be able to see traffic until they proceed further into the street.

The alternative to a stop sign that staff suggested is that the alley be designated as one-way travel east to west. One-way travel in this direction ties in to the existing diagonal parking in the alley, installed in an easterly direction in conjunction with the improvements to buildings facing 11th Street. Additionally, it alleviates the concern of traffic exiting the alley on Pine Street and encountering pedestrian or vehicular traffic. Park Street has less sight line difficulties, including parallel parking instead of diagonal, which severely inhibits the view of traffic on Pine Street.

FISCAL

IMPACT: Minor (cost of signs indicating turn restrictions and one-way alley)

- OPTIONS:**
- a Adopt Resolution No. 04-xx designating the alley between 10th and 11th Streets from Park Street to Pine Street as one-way travel from east to west.
 - b Amend, modify or reject the above option.

Attachments (2)

- 1) Resolution
- 2) Site map

RESOLUTION NO. 04-

A RESOLUTION OF THE CITY COUNCIL OF THE CITY OF PASO ROBLES
DESIGNATING AS ONE-WAY (EAST TO WEST)
THE ALLEY FROM PARK STREET TO PINE STREET BETWEEN 10TH AND 11TH STREETS

WHEREAS, the City received a request for a stop sign at the Pine Street exit of the Alley between 10th & 11th between Park and Pine Streets; and

WHEREAS, the Streets and Utilities Committee recommends designating the alley as one-way from east to west; and

WHEREAS, one-way travel in an east to west direction alleviates the concern of traffic exiting the alley on Pine Street and encountering pedestrian or vehicular traffic.

THEREFORE, BE IT RESOLVED AS FOLLOWS:

SECTION 1. The City Council of the City of El Paso de Robles does hereby designate the alley from Park to Pine Street between 10th and 11th Streets as one-way in an east to west direction.

PASSED AND ADOPTED by the City Council of the City of Paso Robles this 17th day of February 2004 by the following vote:

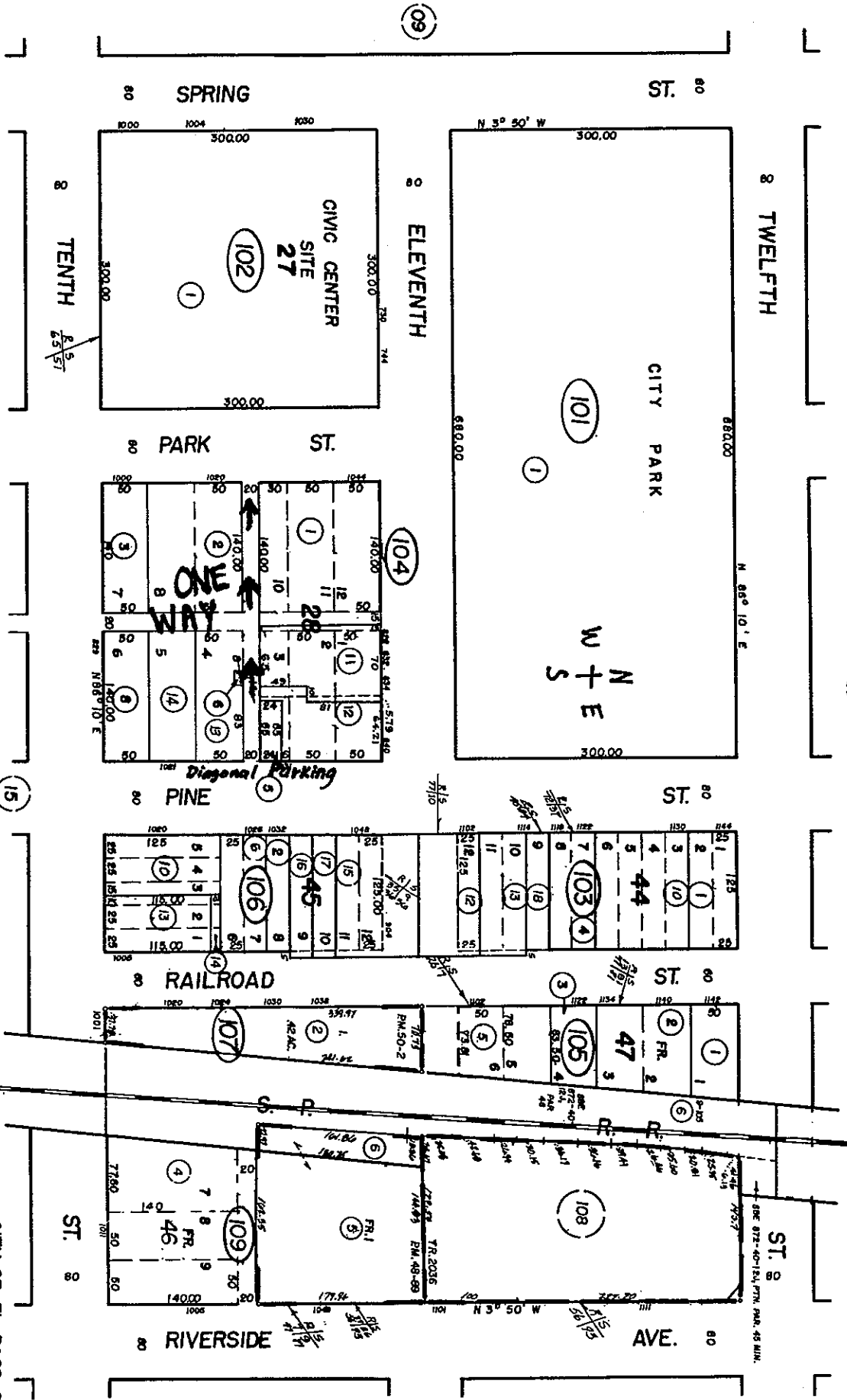
AYES:
NOES:
ABSTAIN:
ABSENT:

Frank R. Mecham, Mayor

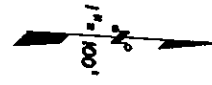
ATTEST:

Sharilyn M. Ryan, Deputy City Clerk

REV. 7/24/81 5-15-91 2-3-92 2-10-93
 1-28-87 2-17-87 5-14-94 5-21-96
 1-29-87 1-20-91 6-24-92 8-25-96



CITY OF EL PASO DE ROBLES
 SAN LUIS OBISPO COUNTY
 CALIFORNIA



9-10
 THIS MAP IS PREPARED FOR
 ASSESSMENT PURPOSES ONLY