

RESOLUTION NO. 94-23

A RESOLUTION OF THE CITY COUNCIL OF
THE CITY OF EL PASO DE ROBLES, CALIFORNIA,
APPROVING THE FINAL MAP FOR PARCEL MAP PR 93-060
(KENT DIAMOND)

WHEREAS, the Developer has met all conditions of the Tentative Map for Parcel Map PR 93-060 (Kent Diamond); and

WHEREAS, City staff has reviewed the final map, a reduction of which is attached as Exhibit "A", and finds it to be in substantial conformance with the approved tentative map and technically correct.

NOW, THEREFORE, BE IT RESOLVED AS FOLLOWS:

Section 1. That the City Council approve Final Map for Parcel Map PR 93-060 (Kent Diamond); and

Section 2. That the City Council authorize execution and recordation of the final map for Parcel Map PR 93-060 (Diamond).

PASSED AND ADOPTED by the City Council of the City of Paso Robles, this 1st day of February, 1994, on the following vote:

AYES:	Heggarty, Macklin, Martin, and Picanco
NOES:	None
ABSENT:	Iversen



CHRISTIAN E. IVERSEN, MAYOR

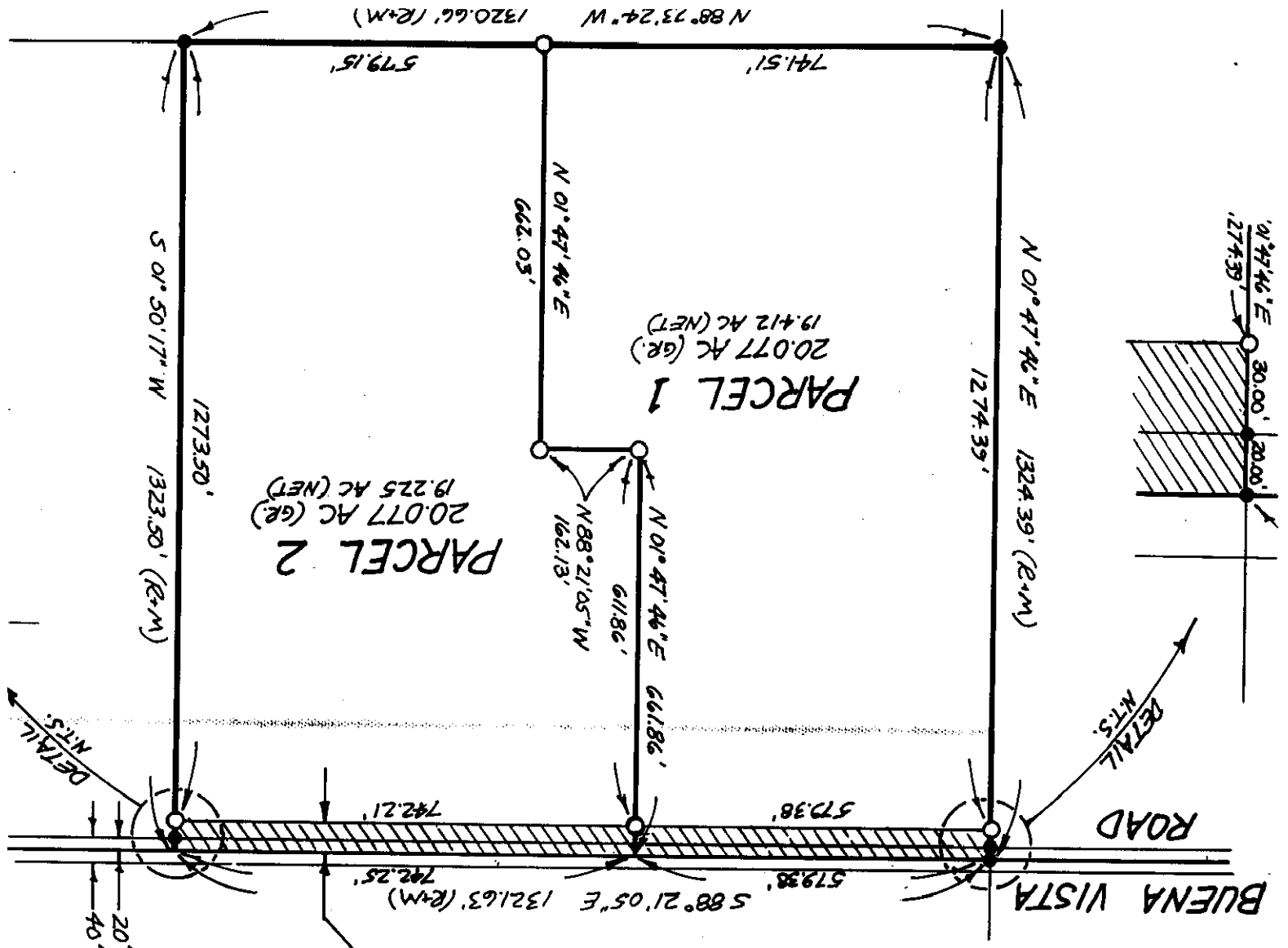
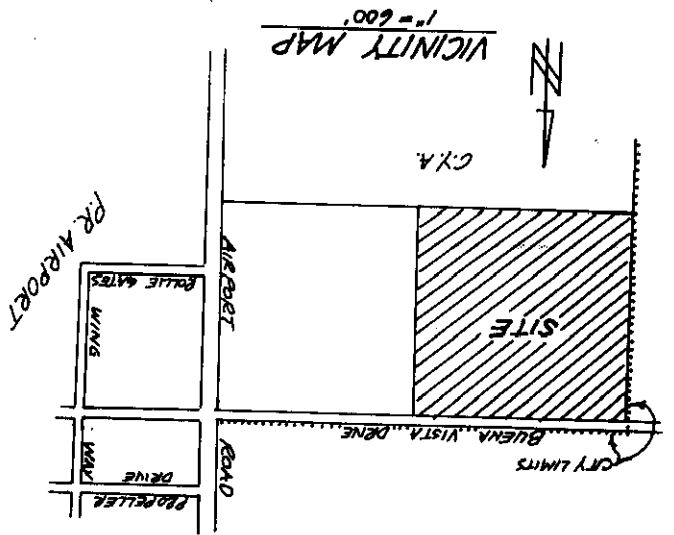
ATTEST:



RICHARD J. RAMIREZ, CITY CLERK

PARCEL MAP PR 93-060

A SUBDIVISION OF THE
 NW 1/4 OF THE NE 1/4 OF
 SECTION 14,
 T26S, R12E, M.D.B.&M.,
 CITY OF EL PASO DE ROBLES,
 SAN LUIS OBISPO COUNTY, CALIFORNIA.



50' OFFER OF DEDICATION
 FOR STREET &
 PUBLIC UTILITY
 PURPOSES.

