

RESOLUTION NO. 06-010

A RESOLUTION OF THE CITY COUNCIL OF THE CITY OF PASO ROBLES
ACCEPTING PARCEL MAP PR 05-0184 FOR RECORDATION
(AZTEC HOLDINGS, LLC)

WHEREAS, the subdividers of tentative Parcel Map 05-0184, located at 2020 Oak Street have requested recordation of the final map; and

WHEREAS, the parcel map allows for the creation of two parcels on a 0.16 acre lot; and

WHEREAS, all conditions of approval for this subdivision have been satisfied by the subdivider; and

WHEREAS, City staff has reviewed the final parcel map and finds it to be in substantial conformance with the approved tentative map and technically correct.

THEREFORE, BE IT RESOLVED AS FOLLOWS:

SECTION 1. That the City Council of the City of Paso Robles does hereby approve the final map for Parcel Map PR 05-0184 and authorize the execution and recordation of the parcel map.

PASSED AND ADOPTED by the City Council of the City of Paso Robles this 7th day of February 2006 by the following vote:

AYES: Heggarty, Nemeth, Picanco, Strong and Mecham
NOES: None
ABSTAIN: None
ABSENT: None

Frank R. Mecham, Mayor

ATTEST:

Cathy M. David, Deputy City Clerk

PARCEL MAP PR 05-0184

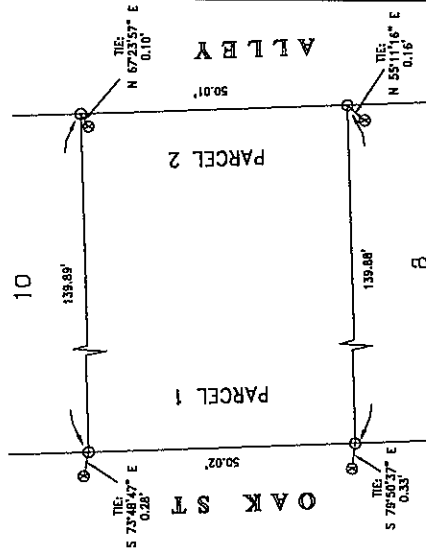
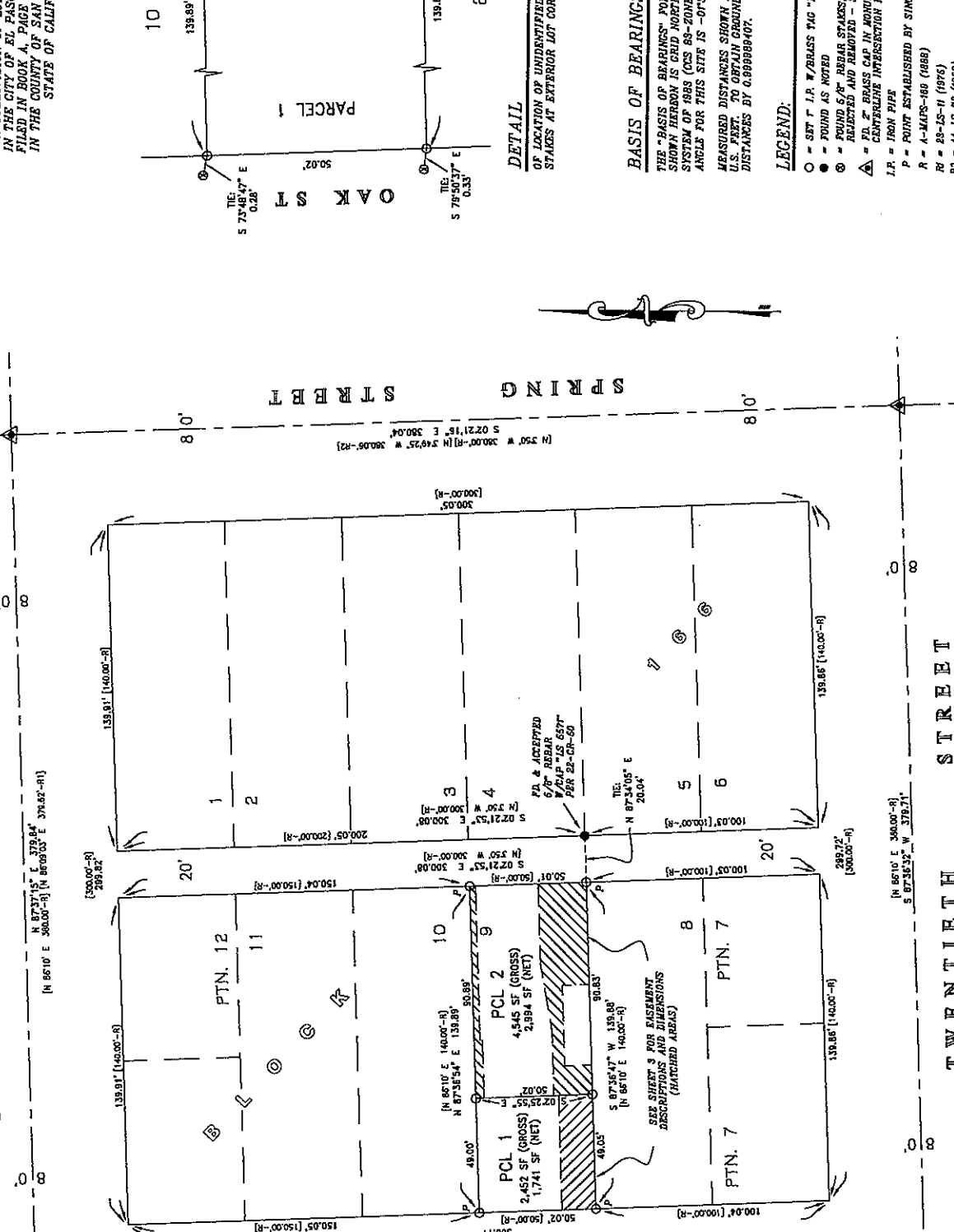
BEING A SUBDIVISION OF LOT 9, IN BLOCK 186,
IN THE CITY OF EVANSTON, CALIFORNIA,
FILED IN BOOK A PAGE 689 OF MAPS,
IN THE COUNTY OF SAN JUAN, CALIFORNIA,
STATE OF CALIFORNIA

TWENTY-FIRST STREET

OAK STREET

SPRING STREET

TWENTIETH STREET



BASIS OF BEARINGS

THE "BASIS OF BEARINGS" FOR THE "MEASURED" BEARINGS SHOWN HEREON IS GRID NORTH PER THE CALIFORNIA COORDINATE SYSTEM OF 1983 (CCS 83-ZONE 6). THE MEAN CONVERGENCE ANGLE FOR THIS SITE IS -0°32'00".

MEASURED DISTANCES SHOWN HEREON ARE GRID DISTANCES IN U.S. FEET. TO OBTAIN GROUND DISTANCES, MULTIPLY GRID DISTANCES BY 0.999998407.

LEGEND:

- = SET I.P. W/ BRASS TAG "LS 4845" UNLESS OTHERWISE NOTED
- = FOUND AS NOTED
- ⊙ = FOUND 6" W/ BRASS STAKES, NO CAP, NO RECORD, REBAR AND UNIDENTIFIED. SEE DETAIL.
- △ = 7" BRASS CAP IN MOUNTAIN W/ELL FOR CENTERLINE INTERSECTION PER PG. 12 OF PG.
- I.P. = IRON PIPE
- P = POINT ESTABLISHED BY SINGLE PROMINATION PER R
- R = A-MAPS-466 (1866)
- R1 = 28-15-II (1976)
- R2 = 44-15-72 (1863)
- R3 = 67-15-41 (1891)

TWIN CITIES SURVEYING, INC.
615-C S. MAIN STREET / P.O. BOX 777
TEMPLETON, CALIFORNIA 93465-0777
(805) 434-1834
SHEET 2 OF 3 JN 05065

