

RESOLUTION NO. 16-006

A RESOLUTION OF THE CITY COUNCIL OF THE CITY OF PASO ROBLES
ACCEPTING THE OFFER OF DEDICATION OF OPEN SPACE IN TRACT 2571

WHEREAS, at their meeting of November 16, 2004, the City Council adopted Resolution 04-249 authorizing the recordation of Tract 2571; and

WHEREAS, the recordation of Tract 2571 included the offer of dedication of open space Lot 35 to the City; and

WHEREAS, Lot 35 is located along a natural stream tributary to the Salinas River and includes a recreational bike and pedestrian path; and

WHEREAS, Lot 35 is maintained by the Landscape and Lighting District associated with the properties in Tract 2571.

THEREFORE, BE IT RESOLVED AS FOLLOWS:

That the City of Paso Robles does hereby accept the Offer of Dedication of open space Lot 35 as shown on the map of Tract 2571 as recorded in Book 24 of Maps, at Pages 71-75, in the office of the County Recorder.

PASSED AND ADOPTED by the City Council of the City of Paso Robles this 19th day of January, 2016 by the following vote:

AYES: Gregory, Strong, Hamon, Reed, Martin

NOES:

ABSENT:

ABSTAIN:

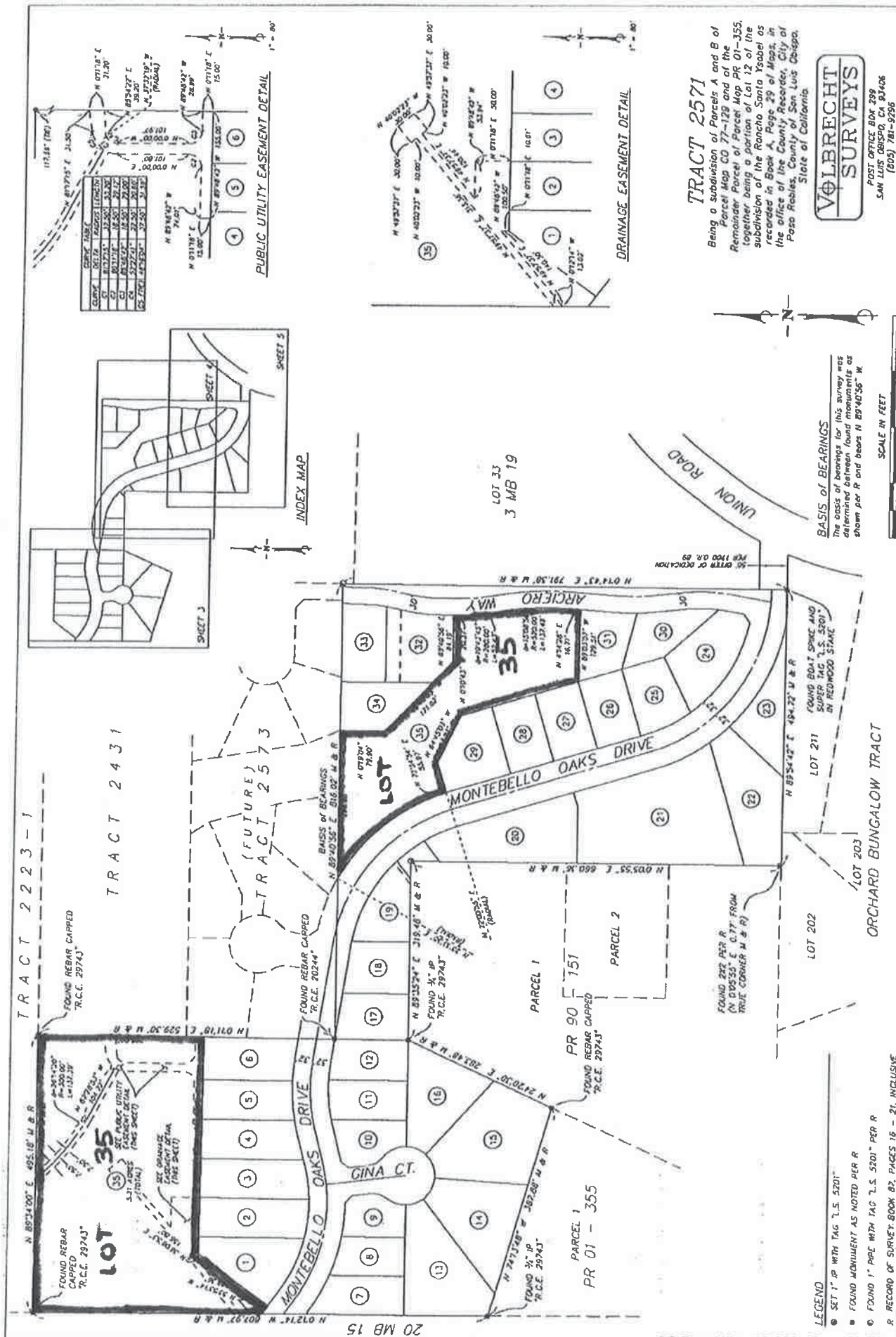


Steven W. Martin, Mayor

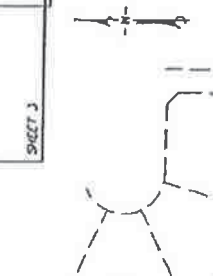
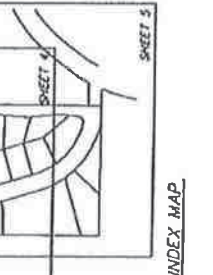
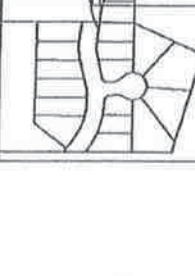
ATTEST:



Kristen L. Buxkemper, Deputy City Clerk



CURVE	DELTA	RADIUS	LENGTH
C1	011.0	12.500	33.262
C2	80.177	18.500	29.172
C3	172.771	18.500	29.200
C4	172.771	18.500	29.200
C5	172.771	18.500	29.200



TRACT 2571
 Being a subdivision of Parcels A and B of Parcel Map CO 77-129 and of the Remainder Parcel of Parcel Map PR 01-355, together being a portion of Lot 12 of the subdivision of the Rancho Santa Ysabel as recorded in Book A, Page 29 of Maps, in the office of the County Recorder, City of Paso Robles, County of San Luis Obispo, State of California.



POST OFFICE BOX 299
 SAN LUIS OBISPO, CA 93406
 (805) 781-9295

BASIS OF BEARINGS
 The basis of bearings for this survey was determined between found monuments as shown per R and bears N 89°40'55" W



- LEGEND**
- SET 1" IP WITH TAG T.S. 5201"
 - FOUND MONUMENT AS NOTED PER R
 - FOUND 1" PIPE WITH TAG T.S. 5201" PER R
 - R RECORD OF SURVEY BOOK B2, PAGES 16 - 21, INCLUSIVE