

Pistacia chinensis

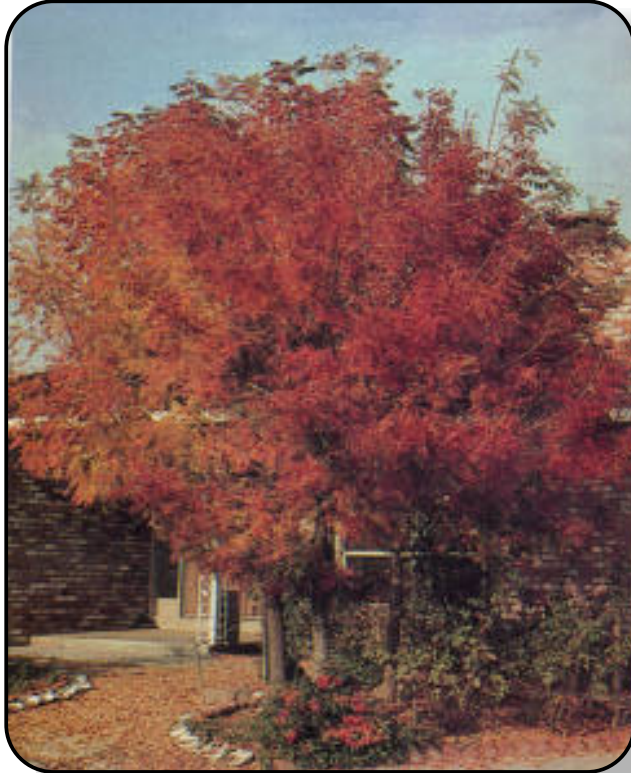


Photo by: Gordon Courtright

Common Name: Chinese Pistache

Family: Anacardiaceae

Light: Full sun.

Characteristics of plant: Slow to moderate growing deciduous tree grows to 30'-60' tall and wide, typically smaller. Has 1' long leaves divided into 10-16 leaflets. Good fall color.

Water needs: Little to regular supplemental water.

Special Features: Tolerant of a wide range of conditions. Resistant to oak root fungus.

Platanus acerifolia



Photo by: Gordon Courtright

Common Name: London Plane Tree

Family: Platanaceae

Light: Full sun.

Characteristics of plant: Fast growing deciduous tree, grows to 40'-80' tall, 30'-40' wide. Has large, rough lobed leaves. Older bark sheds in patches, revealing pale new bark.

Water needs: Moderate to regular supplemental water.

Special Features: Tolerant of many soil types. Susceptible to anthracnose.

Platanus racemosa

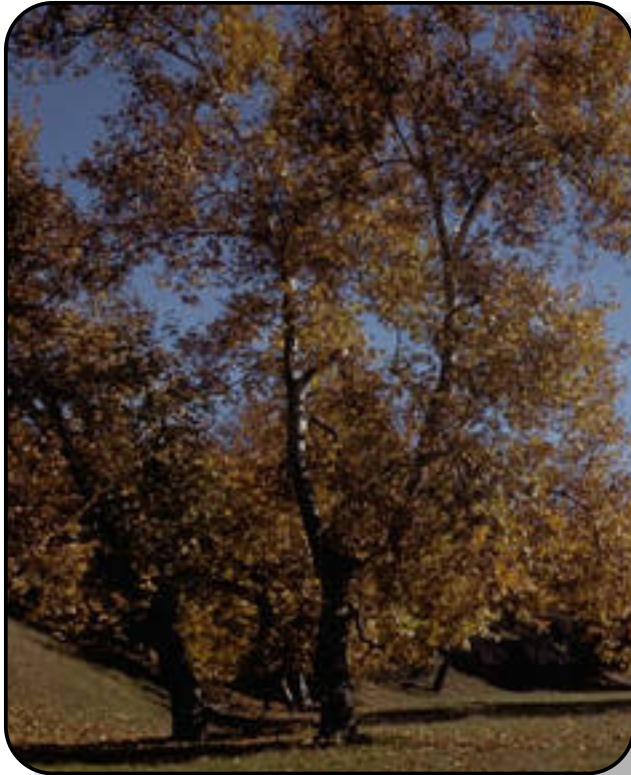


Photo by: Charles Webber, © California Academy of Sciences

Common Name: California Sycamore

Family: Platanaceae

Light: Full sun.

Characteristics of plant: Fast growing deciduous tree grows to 30'-80' tall, 20'-50' wide. Deeply lobed leaves. Bark is patchy, in brown, grey and white. Single or multi-trunked.

Water needs: Moderate to regular supplemental water.

Special Features: Can tolerate much heat and wind. Susceptible to anthracnose.

Populus fremontii



Photo by: Charles Webber © California Academy of Sciences

Common Name: Western Cottonwood

Family: Salicaceae

Light: Full sun.

Characteristics of plant: Fast growing deciduous tree, grows to 40'-60' tall, 30' wide. Glossy green, almost triangular leaves turn bright yellow in fall.

Water needs: Regular supplemental water.

Special Features: Aggressive surface roots. Do not plant near pavement or water lines.

Quercus sp. - California native oaks



Photo by: Beatrice F. Howitt, © California Academy of Sciences

Common Name: Oaks

Family: Fagaceae

Light: Full sun.

Characteristics of plant: Evergreen and deciduous trees. Characteristics and growth habits vary by species.

Water needs: Little to no supplemental water.

Special Features: Drought tolerant.

Quercus ilex



Photo by: Bob Perry

Common Name: Holly Oak

Family: Fagaceae

Light: Full sun.

Characteristics of plant: Evergreen tree that grows to 30'-60' tall and wide. Has dense, rounded head with oval dark green leaves and smooth grey bark.

Water needs: Little or no supplemental water.

Quercus suber

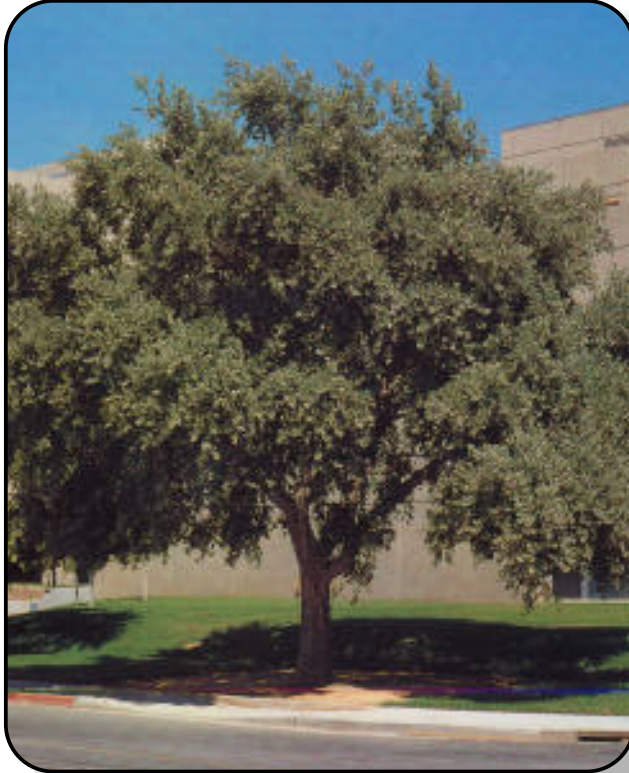


Photo by: Bob Perry

Common Name: Cork Oak

Family: Fagaceae

Light: Full sun.

Characteristics of plant: Evergreen tree that grows to 30'-60' tall and wide. Shining dark green leaves and thick, leathery bark.

Water needs: Little to no supplemental water.

Special Features: Good garden shade tree. Fairly tolerant of various soils, but needs good drainage.

Robinia ambigua 'Idahoensis'



Photo by: Bob Perry

Common Name: Idaho Locust

Family: Fabaceae

Light: Full sun.

Characteristics of plant:

Moderately fast growing to 40' tall, 30' wide. Deciduous tree with leaves divided into rounded leaflets.

Clusters of dark pink, sweet pea-shaped flowers bloom from mid-spring to early summer.

Water needs: Little or no supplemental water.

Special Features: Well adapted to hot, dry areas. Tolerates poor soil. Wood is brittle and roots are aggressive.

Sequoiadendron giganteum



Photo by: Robert Potts © California Academy of Sciences

Common Name: Giant Sequoia
Family: Taxodiaceae
Light: Full sun.
Characteristics of plant: Evergreen tree that grows 2'-3' per year to 60'-100' tall, 30'-50' wide. Dense grey-green foliage and dark reddish-brown bark.
Water needs: Moderate supplemental water.

Umbellularia californica



Photo by: Charles Webber © California Academy of Sciences

Common Name: California Bay
Family: Lauraceae
Light: Full sun or shade.
Characteristics of plant: Slow grower to 20'-25' tall and wide. Evergreen tree with lance-shaped, glossy green leaves. Clusters of tiny yellow flowers in spring, followed by purplish inedible fruit.
Water needs: Little to regular supplemental water.
Special Features: Leaves can be substituted for sweet bay, but are more pungent.

Zelkova serrata



Photo by: Gordon Courtright

Common Name: Sawleaf Zelkova
Family: Ulmaceae
Light: Full sun.
Characteristics of plant: Moderate to fast growing to 60' tall and wide. Deciduous tree with narrow, oval saw-toothed leaves, similar to elm. Smooth grey bark. Fall color varies from yellow to reddish brown.
Water needs: Moderate to regular supplemental water.
Special Features: Tolerant of a wide range of soils, drought and wind.