



## WHY DO WE NEED NACIMIENTO WATER?

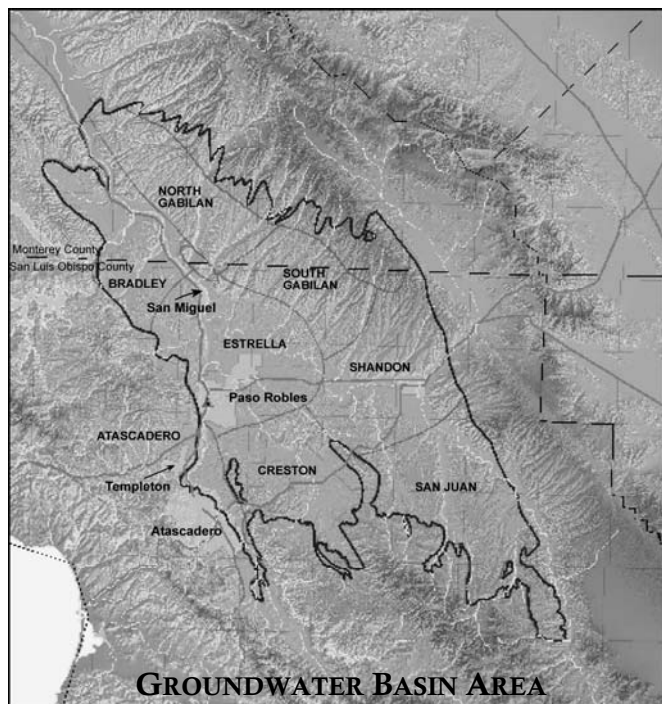
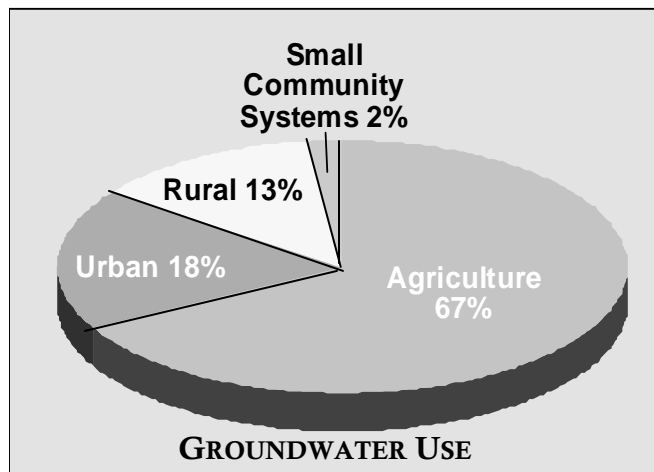
Water is a major determinant of the health and productivity of Paso Robles. Groundwater has been the only source in meeting Paso Robles domestic and irrigation demands.

Our groundwater has a limited ability to sustain human life. Ongoing groundwater mining, coupled with discharge of lower quality used /wastewater into the groundwater, gives rise to the probability that the supply quality will degrade and reserves will be overdrawn.

This trend is observed in our current circumstance as summarized below:

## PASO ROBLES GROUNDWATER BASIN FACTS\*

- The **Paso Robles Groundwater Basin** provides water to urban, rural and agricultural users. Agriculture accounts for about two-thirds of groundwater use.
- The **Paso Robles Groundwater Basin** stores approximately **30.5 million acre feet** of water.
- **Rainfall** is the main source of recharge to the **Paso Robles Groundwater Basin**



- The perennial yield of the basin—the rate at which water can be pumped without causing long-term declines in groundwater storage—has been estimated at **97,700 acre-feet per year**. (An acre-foot provides water for one family for 1 to 2 years.)
- Groundwater pumping totaled **about 83,000 acre-feet** in 2000 and has since increased.
- The **City of Paso Robles** uses 3,400 acre-feet per year from basin wells.

\*2002 “Paso Robles Groundwater Basin Study”  
By Fugro West, Inc.

(Continued on page 2)

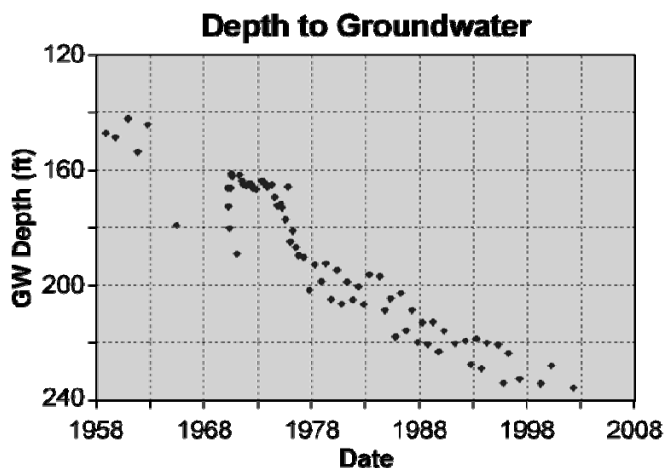


# PASO ROBLES GROUNDWATER BASIN FACTS

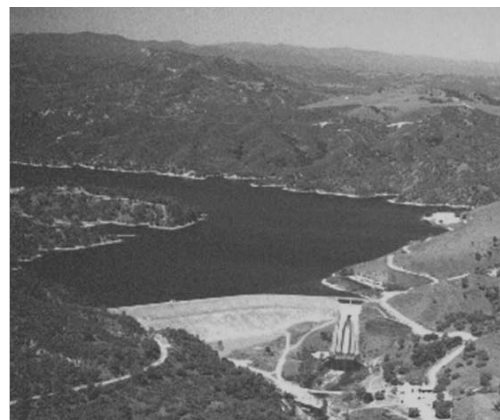
## CHALLENGES

*and*

## OPPORTUNITIES



- Groundwater levels are declining locally.
- Storage in the Paso Robles Groundwater Basin is decreasing by 3,300 acre feet per year. If this trend continues, overdraft may occur.
- Hot dry summers result in peak water demands that are difficult to meet.
- Domestic rural demand for groundwater is expected to double over the next 25 years.
- Without an additional source of water, demand may soon exceed the yield of the Paso Robles Groundwater Basin.
- Widespread use of water softeners in homes and certain industrial activities result in salt loading to wastewater that is recharged to the groundwater basin deteriorating water quality.



### LAKE NACIMIENTO DELIVERY

- The City of Paso Robles has contracted for 4,000 acre feet per year from Lake Nacimiento. Additional supply is available.
- During a drought, Lake Nacimiento contracts provide the City with reliable deliveries.
- Lake Nacimiento water will reduce municipal dependence on groundwater basin supplies and increase water supply reliability.
- Lake Nacimiento water is high quality for consumers and will yield long-term water quality benefits to the Paso Robles Groundwater Basin.