



The REC Foundation is a non-profit fundraising corporation committed to creating enhanced programs, places, and open spaces for quality recreational experiences in Paso Robles.

Facilities Amenities	To reserve, go to www.prcity.com or call 805.237.3991 *May be reserved															
	Baseball Diamonds	Outdoor Basketball Courts	BBQ	Gymnasium Basketball/Volleyball/Futsal	Kitchen	Meeting Rooms	Pickleball Courts	Picnic Area(s)	Playground	Restrooms	Skate Park	Soccer Fields	Swimming Pool	Tennis Courts	Trail(s)	Volleyball
BARNEY SCHWARTZ PARK* 2970 Union Road	4		3					✓	2	4		4			✓	
CENTENNIAL PARK * 600 Nickerson Drive		1	1	1	1	4	5	✓	1	2			1	4	✓	
CITY PARK * 11th & Park Street			2					✓	1	1					✓	
LARRY MOORE PARK 155 Riverbank Lane									1	1					✓	
MUNICIPAL POOL 534 - 28th Street										2		2				
OAK CREEK PARK 301 Cedarwood Drive			1					✓	1						✓	
PIONEER PARK * 2030 Riverside Avenue	1	2	1					✓	1	1	1					
ROBBINS FIELD * 826 - 7th Street	1															
ROYAL OAK MEADOWS 1100 Parkview Lane			1												✓	
SHERWOOD DOG PARK 290 Scott Street				Secure Dog Friendly Park												
SHERWOOD PARK * 1860 Creston Road	2	2	1					✓		2		2		4	✓	1
SHERWOOD FOREST 220 Scott Street									1	1						
Uptown Family Park 641 36th Street									1	1						



City of Paso Robles Parks & Trails

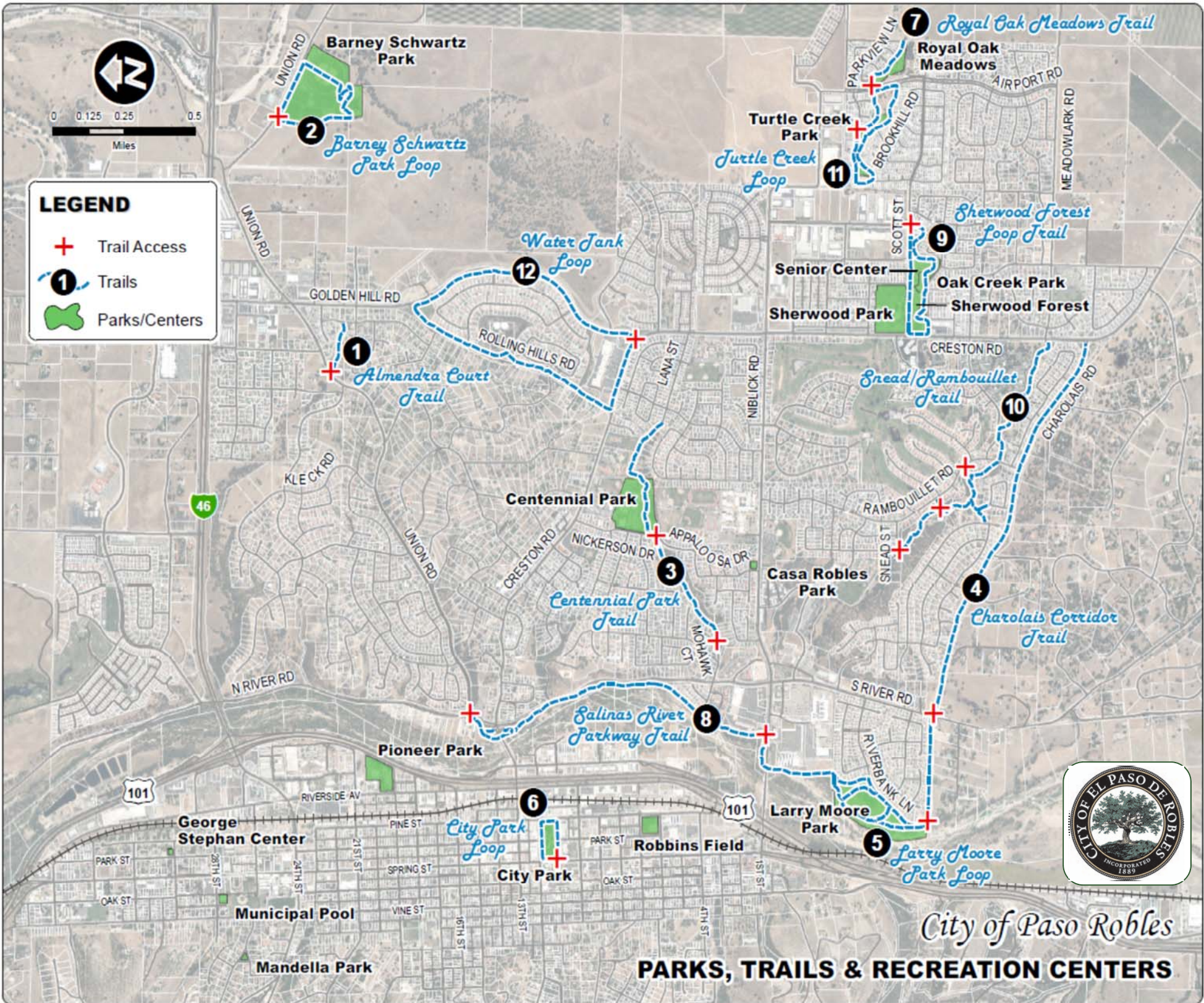


Brought to you by the Department of
LIBRARY & RECREATION SERVICES
and the
REC FOUNDATION

www.prcity.com/recreation

- ◆ Dogs are permitted on trails if on-leash.
- ◆ Please be courteous to other trail users and pick-up after your dog.
- ◆ Horses or off-road motorized vehicles are not permitted on City trails.

- 1** **Almendra Court Trail** - 0.17 mile paved trail starting at Crown Hill or Union.
- 2** **Barney Schwartz Park Loop** - 0.88 mile paved loop trail is located at 2970 Union in Barney Schwartz Park.
- 3** **Centennial Park Trail** - 0.92 mile paved trail from Lana Street to Mohawk Ct. Public parking at Centennial Park, 600 Nickerson Drive. Sidewalk connection from Mohawk Ct. to Salinas River Parkway Trail 0.26 mile.
- 4** **Charolais Corridor Trail** - 1.75 miles paved trail along Charolais Road connecting to Charolais Corridor from Creston Road to Riverbank Lane.
- 5** **Larry Moore Park Loop** - 0.5 mile paved & dirt trail from Riverbank Lane cul-de-sac along river frontage to paved trail around Larry Moore Park.
- 6** **Paso Robles City Park Loop** - 0.36 mile flat downtown loop around the park, located at 11th and Park Streets.
- 7** **Royal Oak Meadows Trail** - 0.2 mile paved trail located at Parkview and Airport.
- 8** **Salinas River Parkway Trail** - 1.6 miles paved (with dirt sections) from Riverbank cul-de-sac to 13th Street Bridge. Includes short section of low-grade dirt slope.
- 9** **Sherwood Forest Loop** - Just under 1 mile loop trail around Sherwood Forest on concrete/dirt starting at 220 Scott.
- 10** **Snead/Rambouillet Trail** - 1.28 mile paved/dirt trail with creek crossings starting at Snead or Rambouillet.
- 11** **Turtle Creek Loop** - 0.92 mile paved loop trail located at Turtle Creek Park at Brookhill and Airport.
- 12** **Water Tank Loop** - Just under 2 mile paved loop trail starting at Creston Rd.



~ PASO ROBLES TRAILS ~