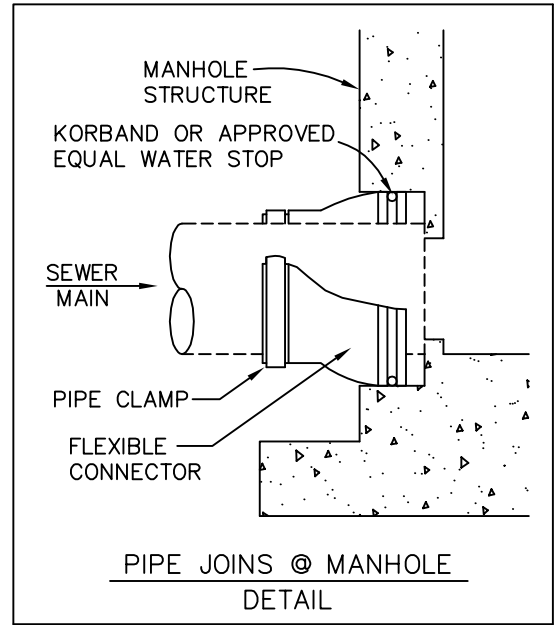
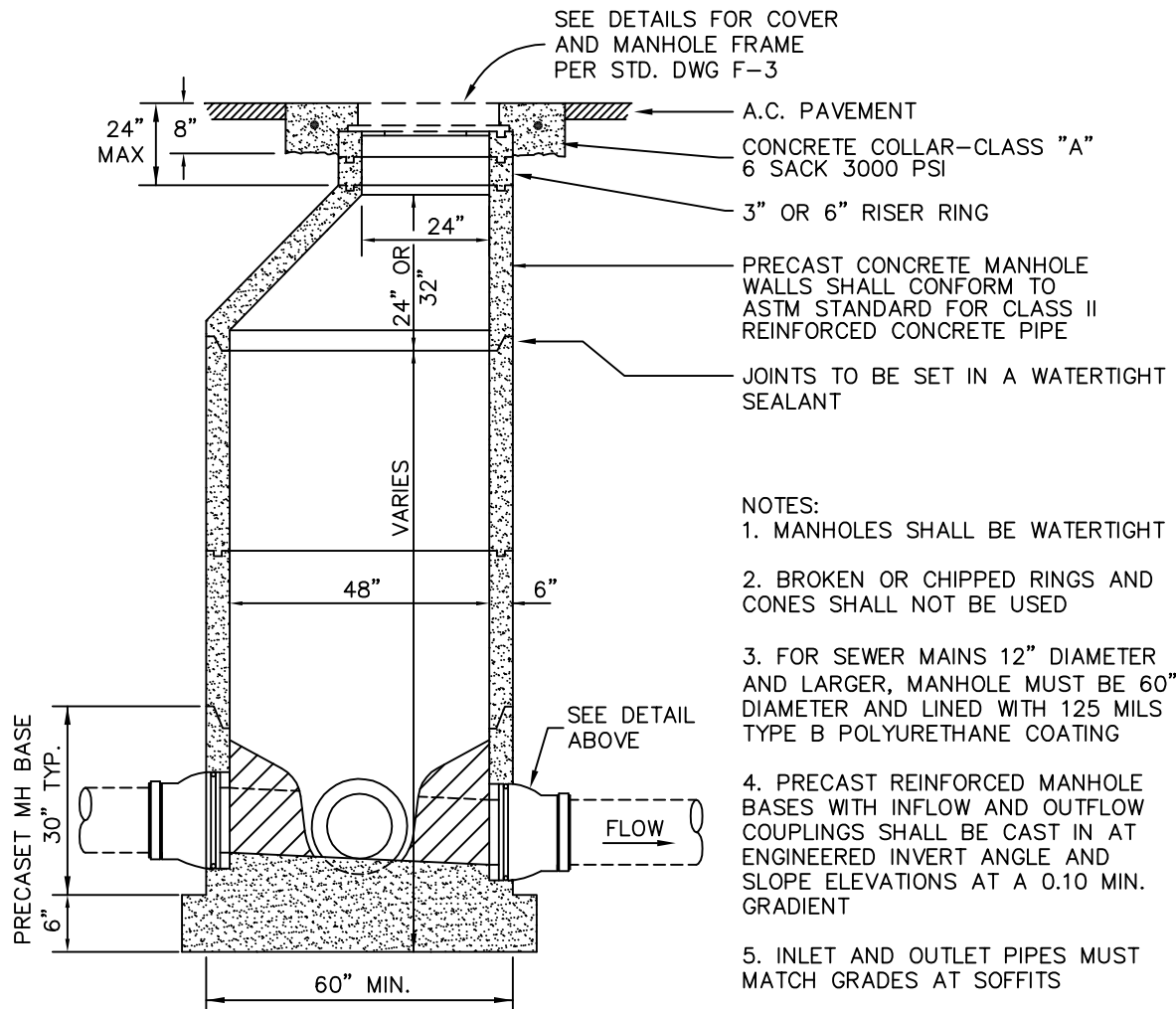


SLOPE SHELVES TO DRAIN

PLAN VIEW



**PIPE JOINS @ MANHOLE
DETAIL**



SEE DETAILS FOR COVER AND MANHOLE FRAME PER STD. DWG F-3

24" MAX
8"

A.C. PAVEMENT
CONCRETE COLLAR-CLASS "A"
6 SACK 3000 PSI
3" OR 6" RISER RING

PRECAST CONCRETE MANHOLE WALLS SHALL CONFORM TO ASTM STANDARD FOR CLASS II REINFORCED CONCRETE PIPE
JOINTS TO BE SET IN A WATERTIGHT SEALANT

- NOTES:
1. MANHOLES SHALL BE WATERTIGHT
 2. BROKEN OR CHIPPED RINGS AND CONES SHALL NOT BE USED
 3. FOR SEWER MAINS 12" DIAMETER AND LARGER, MANHOLE MUST BE 60" DIAMETER AND LINED WITH 125 MILS TYPE B POLYURETHANE COATING
 4. PRECAST REINFORCED MANHOLE BASES WITH INFLOW AND OUTFLOW COUPLINGS SHALL BE CAST IN AT ENGINEERED INVERT ANGLE AND SLOPE ELEVATIONS AT A 0.10 MIN. GRADIENT
 5. INLET AND OUTLET PIPES MUST MATCH GRADES AT SOFFITS

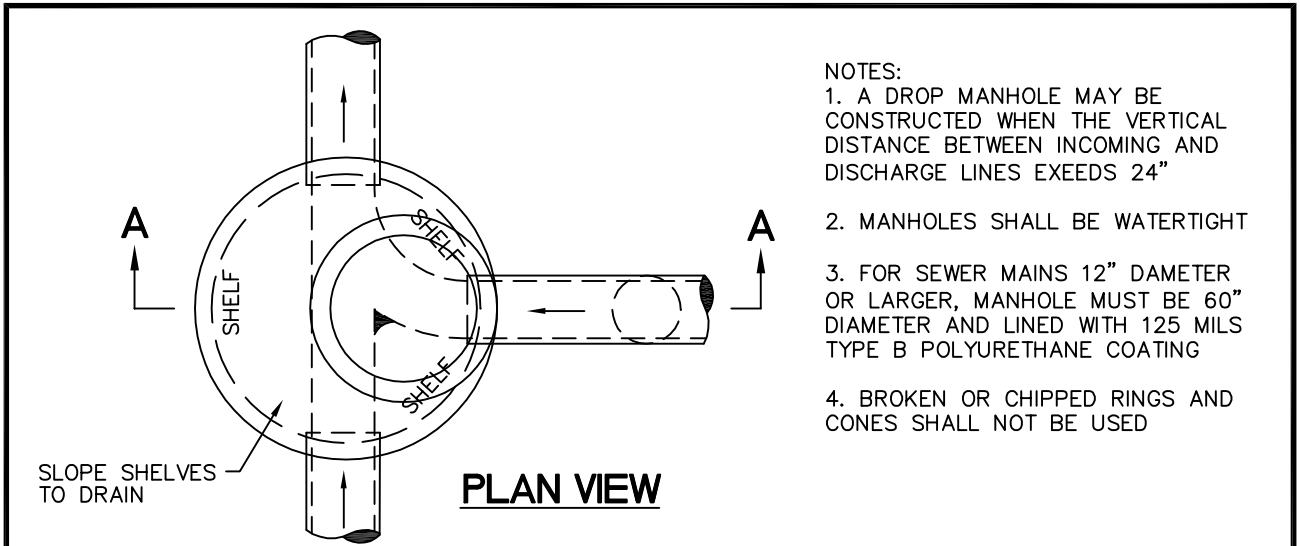
PRECAST MH BASE
30" TYP.
6"

SEE DETAIL ABOVE

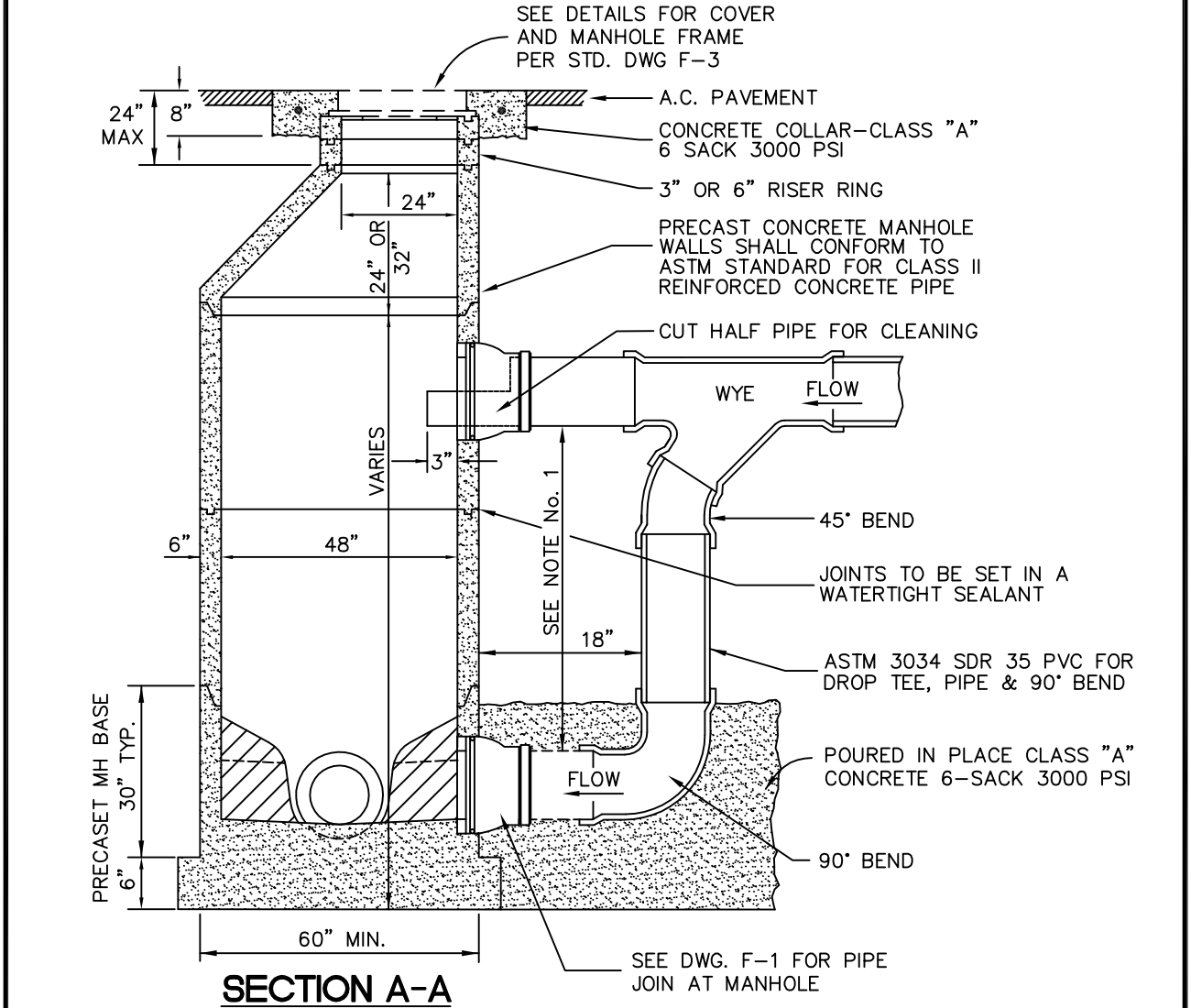
FLOW

SECTION A-A

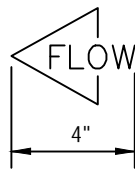
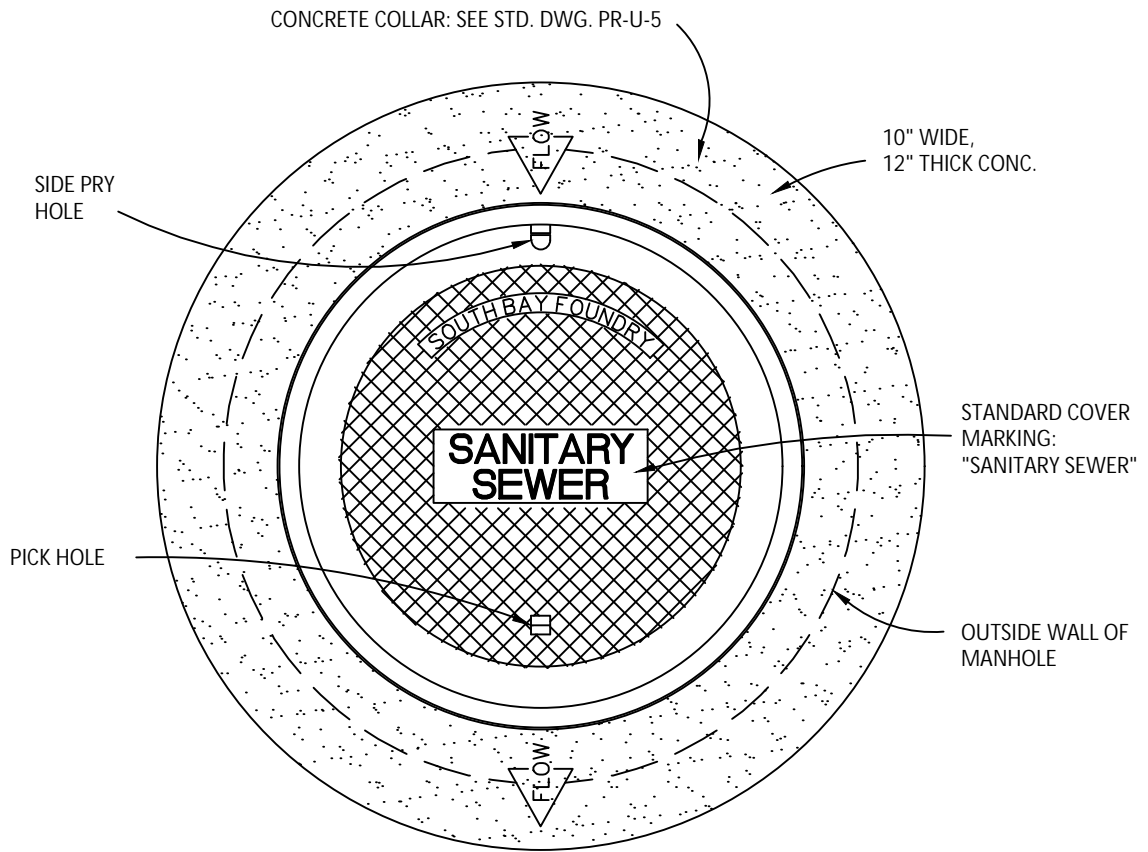
DRAWN BY: KGE DESIGNED BY: JF DATE: 05/12 FILE NAME: PR-F-1.DWG	CITY OF PASO ROBLES ENGINEERING DIVISION STANDARD SEWER MANHOLE WITH PRECAST BASE	DRAWING NO. F-1
--	--	------------------------



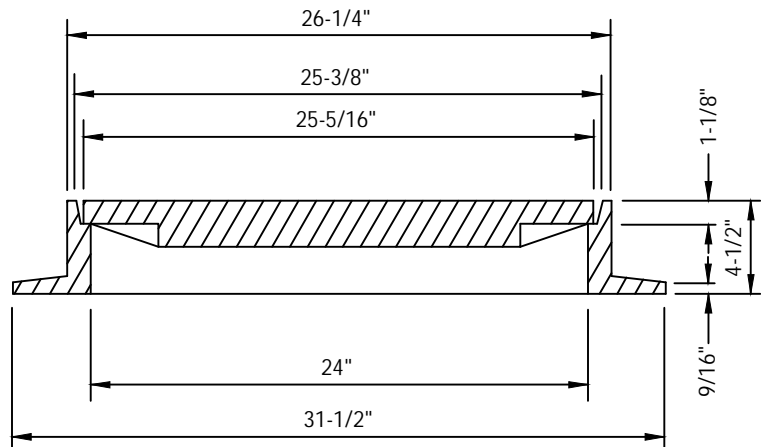
- NOTES:
1. A DROP MANHOLE MAY BE CONSTRUCTED WHEN THE VERTICAL DISTANCE BETWEEN INCOMING AND DISCHARGE LINES EXCEEDS 24"
 2. MANHOLES SHALL BE WATERTIGHT
 3. FOR SEWER MAINS 12" DAMETER OR LARGER, MANHOLE MUST BE 60" DIAMETER AND LINED WITH 125 MILS TYPE B POLYURETHANE COATING
 4. BROKEN OR CHIPPED RINGS AND CONES SHALL NOT BE USED



DRAWN BY: KGE	CITY OF PASO ROBLES ENGINEERING DIVISION	DRAWING NO.
DESIGNED BY: JF		
DATE: 05/12	DROP MANHOLE	F-2
FILE NAME: PR-F-2.DWG		



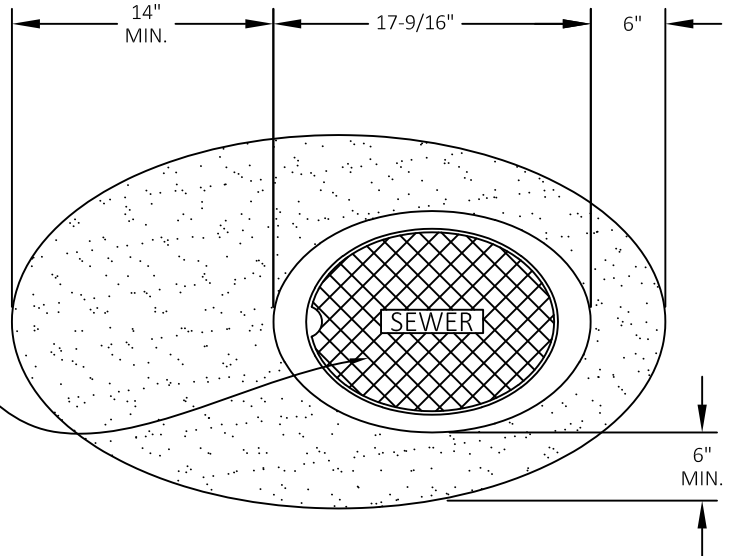
STAMP THE CONCRETE COLLAR WITH THIS NOTATION (OR EQUAL) TO SHOW FLOW DIRECTION OF SEWER LINES CONNECTED TO THE MANHOLE. CONTACT THE WASTEWATER DIVISION FOR STAMPING TOOL, IF NEEDED.



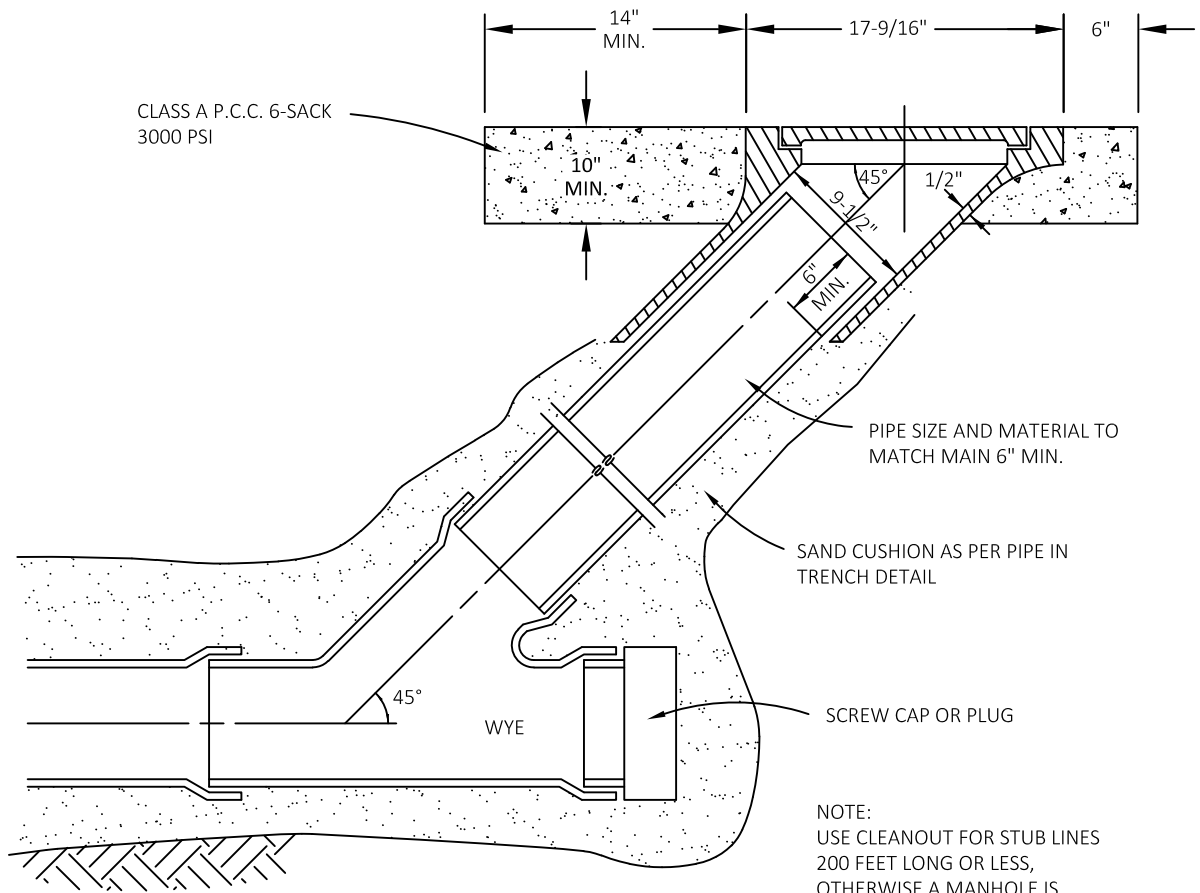
STANDARD MANHOLE COVER AND FRAME SHALL BE SOUTH BAY FOUNDRY MODEL SBF 1900 BPH OR APPROVED EQUAL

DRAWN BY: KMF	CITY OF PASO ROBLES ENGINEERING DIVISION	DRAWING NO.
DESIGNED BY: JF		F-3
DATE: 04/17	<h1>SEWER MANHOLE COVER</h1>	
FILE NAME: PR-F-3.DWG		

FRAME & COVER SOUTH BAY
 MODEL 1247 FOR 8" PIPE
 MODEL 1248 FOR 6" PIPE

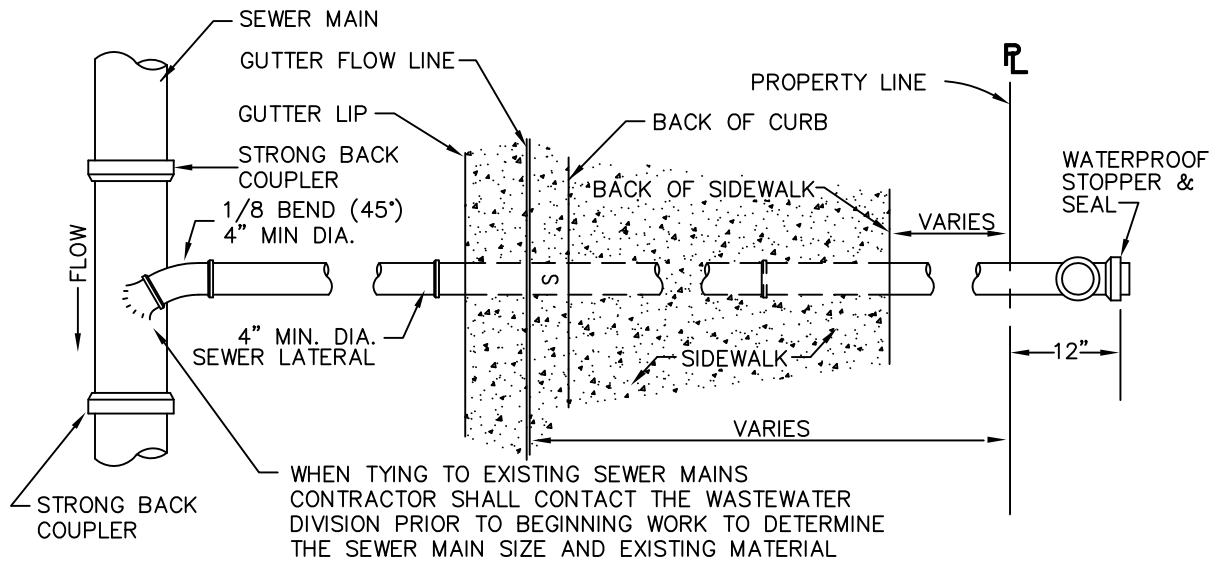


CLASS A P.C.C. 6-SACK
 3000 PSI



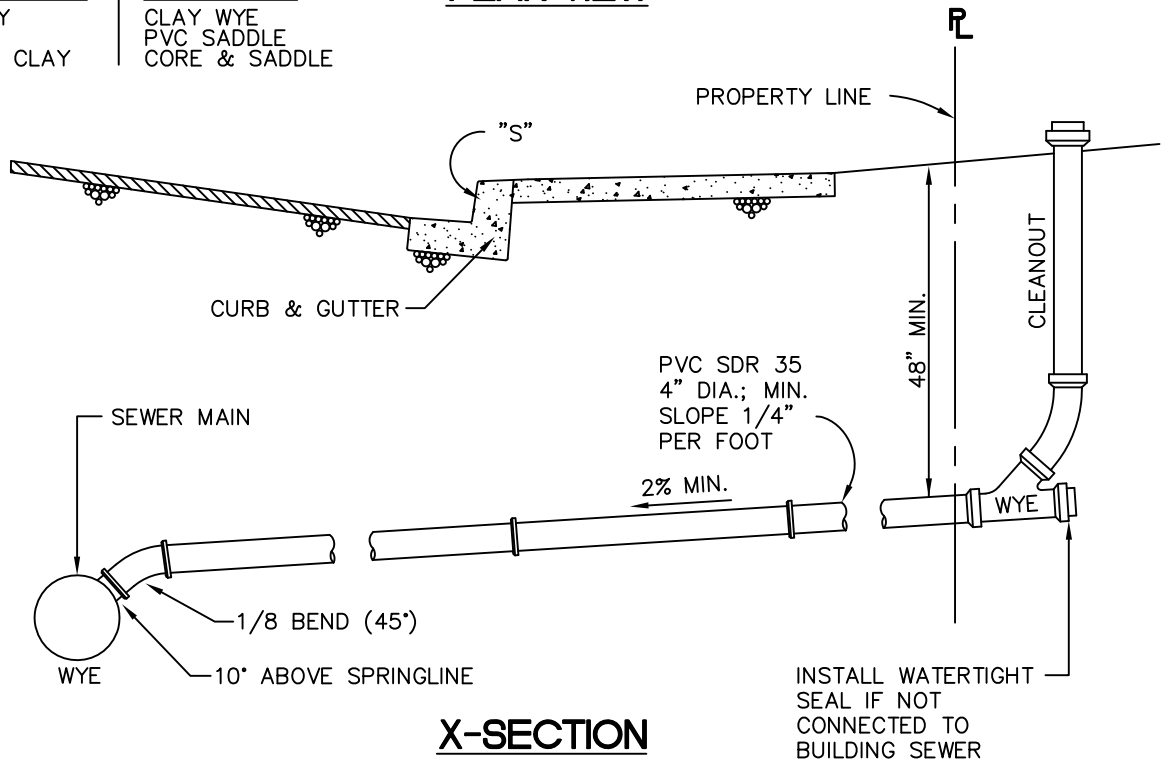
NOTE:
 USE CLEANOUT FOR STUB LINES
 200 FEET LONG OR LESS,
 OTHERWISE A MANHOLE IS
 REQUIRED

DRAWN BY: KF	CITY OF PASO ROBLES ENGINEERING DIVISION	DRAWING NO.
DESIGNED BY: JF		F-4
DATE: 11/16	SEWER CLEANOUT	
FILE NAME: PR-F-4.DWG		



SEWER MAIN MATERIAL	REQUIRED CONNECTION
CLAY	CLAY WYE
PVC	PVC SADDLE
LINE CLAY	CORE & SADDLE

PLAN VIEW



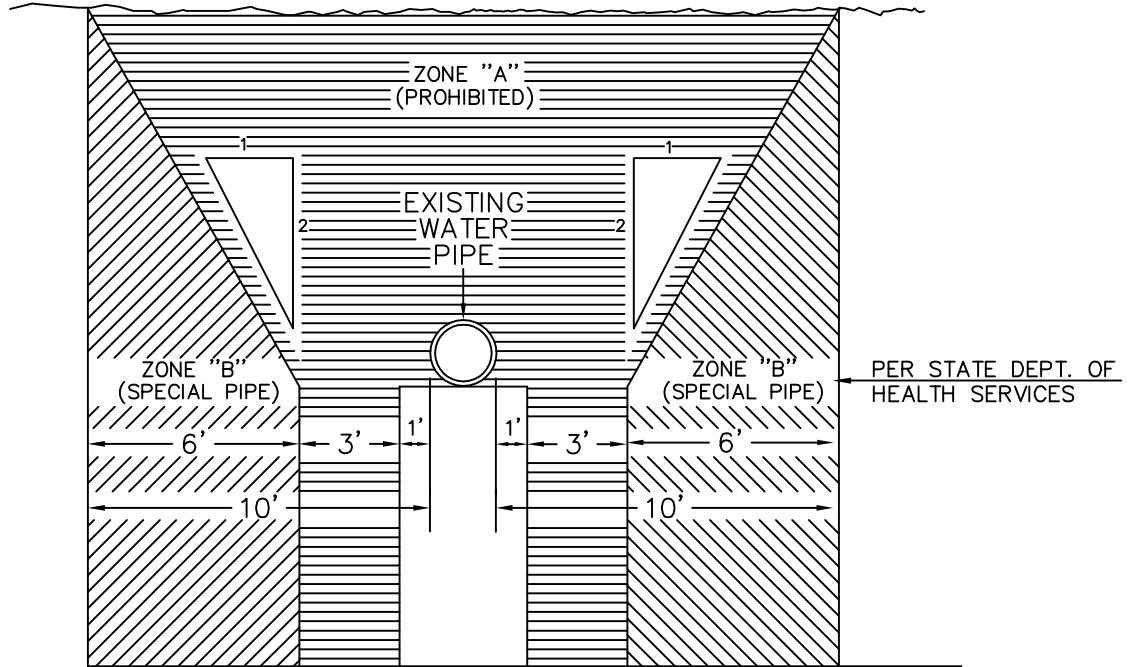
X-SECTION

NOTES:

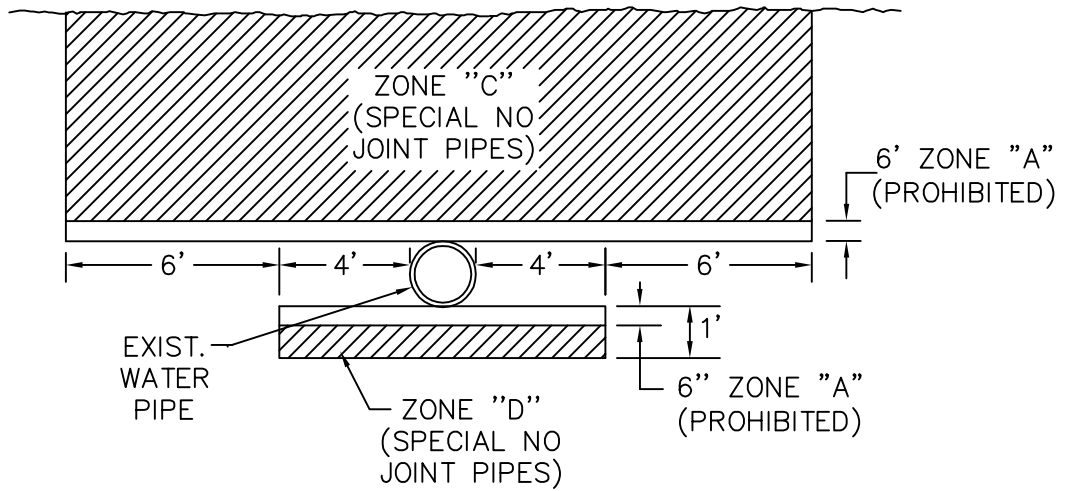
1. "S" SHALL BE MARKED ON CURB FACE OVER LATERAL
2. "S" SHALL BE STAMPED INTO NEW CONCRETE AND SHALL BE CHISELED INTO EXISTING CONCRETE
3. THE "S" SHALL BE NOT LESS THAN 3" HIGH, 2" WIDE AND 3/16" DEEP
4. MAINTAIN MINIMUM 10' HORIZONTAL SEPARATION FROM WATER SERVICE
5. SEWER LATERALS SHALL NOT BE LOCATED IN DRIVEWAYS

DRAWN BY: KGE	CITY OF PASO ROBLES ENGINEERING DIVISION	DRAWING NO.
DESIGNED BY: JF		SEWER LATERAL LOCATION
DATE: 08/11		
FILE NAME: PR-F-5.DWG		

SPECIAL CONSTRUCTION REQUIREMENTS FOR SEWER MAINS PLACED IN CLOSE PROXIMITY TO WATER MAINS



PARALLEL CONSTRUCTION



PERPENDICULAR CONSTRUCTION

NOTE:
THIS DESIGN CRITERIA MAY BE USED ONLY IN CASES WHERE NO REASONABLE
OPTIONS FOR STANDARD SEPARATION OF WATER AND SEWER LINES CAN BE FOUND
AS DETERMINED BY THE CITY ENGINEER.

DRAWN BY: KGE	CITY OF PASO ROBLES ENGINEERING DIVISION	DRAWING NO.
DESIGNED BY: JF	CALIFORNIA HEALTH DEPARTMENT REQUIREMENTS	F-6
DATE: 11/10		
FILE NAME: PR-F-6.DWG		