







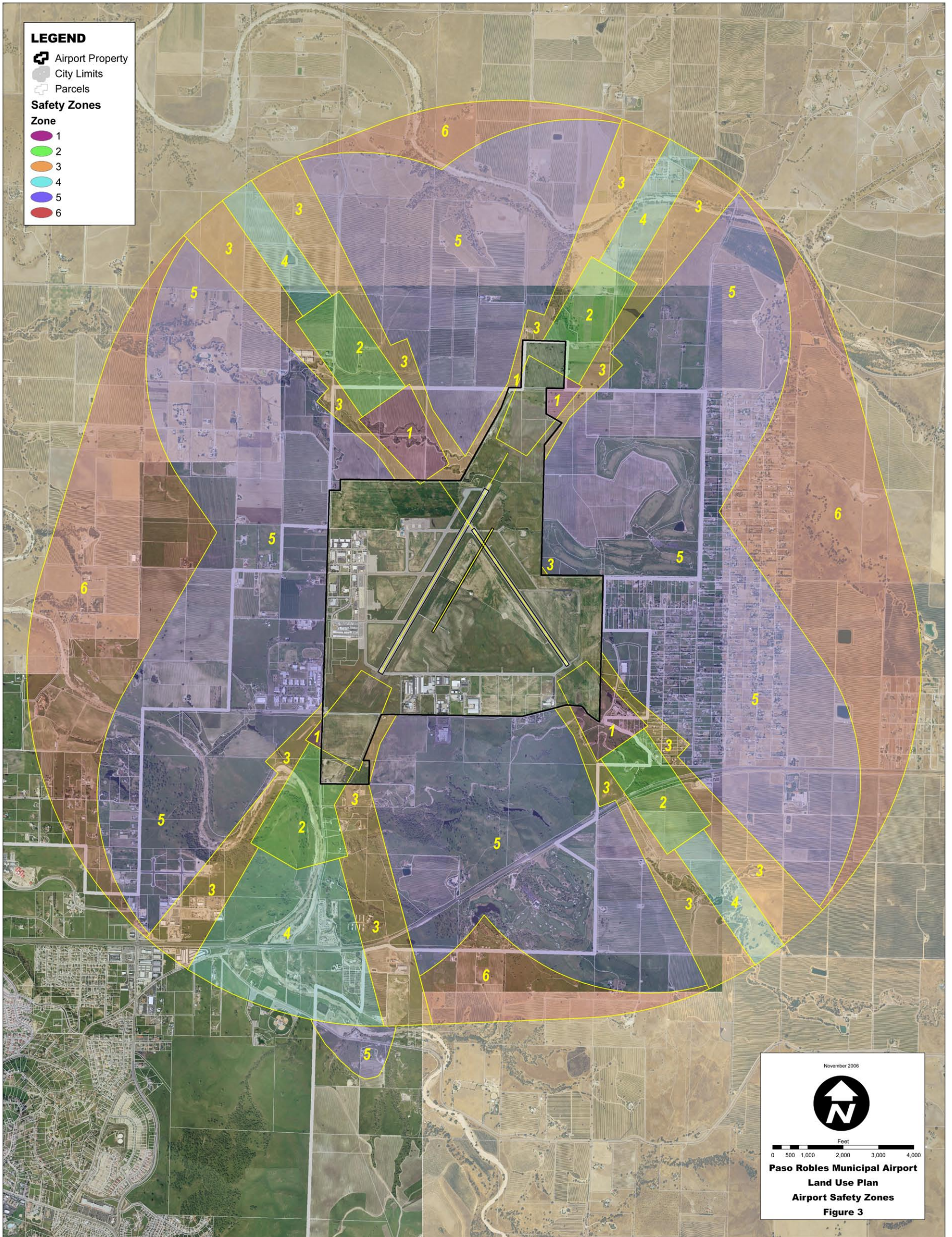
LEGEND

-  Airport Property
-  City Limits
-  Parcels

Safety Zones

Zone

-  1
-  2
-  3
-  4
-  5
-  6



November 2006



Feet

0 500 1,000 2,000 3,000 4,000

**Paso Robles Municipal Airport
Land Use Plan
Airport Safety Zones
Figure 3**